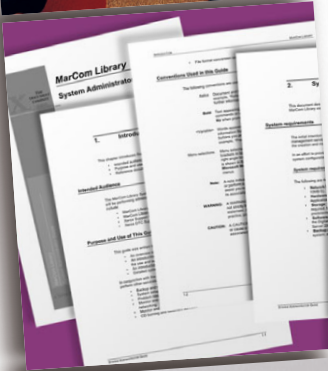


Power and Performance within reach.



Office machines

with the drive to **succeed.**



Meet the CopyCentre® C20 digital copier, WorkCentre® M20 and WorkCentre® M20i copier-printers: our newest business class machines. They perform basic office tasks with intelligence, and demonstrate a knack for high-level performance, day in and day out. The tools you need, at three feature-rich levels...all of which sit comfortably on a desktop.

Extremely simple to use

Intuitive, simple to operate and incredibly convenient. Start with straightforward copy features that are a breeze to use. And add the functionality of network printing, fax and scan-to-email capabilities.

- Walk-up easy copying
- Interface is easy to understand at a glance. Press a few buttons and your task is complete
- High-quality printing on a wide range of media
- Simple print drivers for fast installation and instant productivity (M20/M20i)
- Powerful faxing in color or black-and-white (M20i)
- Scan in color or black-and-white (M20/M20i)
- Simple scanning direct to PC through USB connection (M20/M20i)

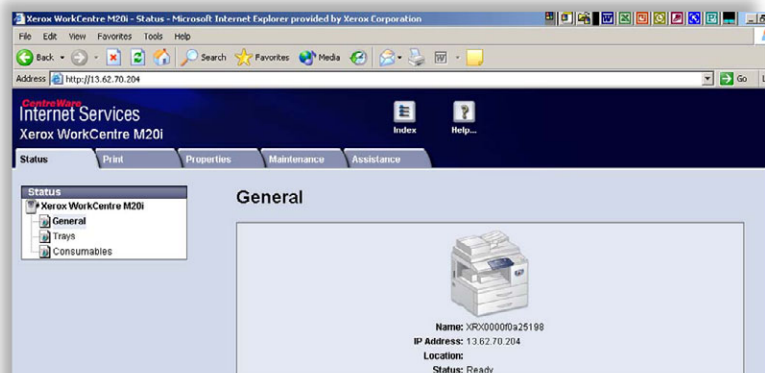
Extra smart design

Intelligent design and thoughtful feature set reduces the effort devoted to basic office tasks.

- Print directly from your network — or from the Internet (networked models*)
- Capable of feeding from multiple paper trays
- Scan to email addresses with push button ease (networked models*)
- Optical Character Recognition (OCR) and Image Editing Software are included to convert scanned images into editable text documents (M20/M20i)
- Xerox ControlCentre™ 5.0 lets you monitor fax usage, enter phonebook data and more — right from your PC (M20i)
- Remote device management tools available to easily monitor, manage and control networked devices (networked models*)

*Networked models include M20i plus M20 with optional network accessory kit

CentreWare IS gives your entire network access to WorkCentre M20i features.



The simple, intuitive design of C20 and M20/M20i control panels makes them easy to use. Many features are accessible with the touch of a single button.

Copy, fax and scan to email functions available through easy access buttons.

LCD panel shows job and machine status.

Separate button displays job status in LCD window.

Alpha-numeric keypad supports fax features.



Convenient keyboard for scanning to email.

Frequently used features such as collate, reduce/enlarge, lighten/darken are controlled by separate buttons.

Select two-sided copying with just one button push.

Device status display shows whether the system is ready or needs attention.

Image shown is the M20i control panel

Excellent performance

CopyCentre C20 copier and WorkCentre M20 and WorkCentre M20i copier-printers come packed with a full range of high-performance features you won't find on other office machines in this class:

- 22 ppm (Letter) speeds
- Automatic two-sided printing and copying saves paper and produces more professional looking documents
- Ultra-fast 33.6Kbps fax transmission with 16MB of fax memory (M20i)
- Scan-once-print-many reliability and productivity
- Electronic collation saves time by eliminating manual sorting

- 100-sheet bypass tray supports envelopes, transparencies and special media
- Optional second paper tray increases capacity to 1,200-sheets



WorkCentre M20i

Rock-solid reliability.

The Xerox name is synonymous with quality, innovation and service. It also means day-in, day-out reliability. CopyCentre C20 copiers and WorkCentre M20/M20i copier-printers are extremely durable, designed and built to perform flawlessly in today's high-speed, high-pressure workgroup settings.

Security

With WorkCentre M20/M20i, you stay in control. It offers network device access protection that's safe and flexible. In addition, the fax capabilities on the M20i include a secure fax mode, so sensitive information prints out only when you want it to.



Call today. For US and Canada product information, call **1-877-362-6567**. To speak to a US Sales Representative, call **1-800-ASK-XEROX**. Or visit us at www.xerox.com/office

CopyCentre® C20 / WorkCentre® M20 / M20i



Second Paper tray Option

CONFIGURATIONS	CopyCentre® C20	WorkCentre® M20	WorkCentre® M20i
Copy/Print			
Speed	22 ppm		
First copy out time	< 8 seconds		
Resolution	600 x 600 dpi	up to 1200 dpi	
Processor	N/A	32-bit RISC processor with video controller functionality	
Connectivity	N/A	USB 2.0, Parallel	USB 2.0, Parallel, 10/100 BaseT Ethernet
Scan			
Resolution	N/A	600 x 600 dpi, 4800 dpi interpolated	
Scan-to-email	N/A	optional	standard
Fax			
Speed	N/A	N/A	33.6 Kbps
Resolution	N/A	N/A	presets up to 400 x 400 dpi
Paper Handling			
Automatic 2-sided	Standard		
Paper input capability	550-sheet Standard Tray, 100-sheet Bypass Tray		
Paper output	250-sheet Output Tray		
Productivity			
Standard features	50-sheet Duplex Automatic Document Feeder, Scan-Once-Print-Many Electronic pre-collation		Network printing, Scan-to-Email, Remote Device Management Tools
Optional accessories	550-sheet Feeder, Cabinet Stand, Foreign Device Interface		Optional Network Accessory Kit
Duty cycle	Up to 20,000 pages per month		

SPECIFICATIONS

Copying

Speed: 22 copies per min. (letter); 21 copies per min. (A4)
 Resolution: 600 x 600 dpi
 First Copy Out: < 8 seconds
 Full Duplex: Yes (1-2, 2-2, 2-1)
Reduce/Enlarge
 Platen: 25 – 400% in 1% increments
 DADF: 25 – 100% in 1% increments
 Productivity: Scan Once Print Many, Electronic Pre-Collation standard
 Multiple Copies: Up to 999 copies of multiple page originals

Printing (M20, M20i)

Technology: Laser monochrome
 Speed: 22 ppm Letter; 21 ppm A4
 Resolution: 600 x 600 dpi; 1200 x 1200 dpi interpolated
 First Print Out: < 9 seconds
 Two-Sided: Yes
 Page Description Language (PDL): PCL6 emulation Standard; PostScript 3 printing support (Network products)
 Print Drivers: Windows 98/NT4.0/2000/Me/XP, MAC OS
 Interfaces: USB 2.0 standard on M20 and M20i (USB cable included); Parallel Port, IEEE 1284, 10/100baseT Ethernet standard on M20i, optional on M20

Scan (M20, M20i)

Compatibility: TWAIN standard
 Technology: Direct Connect to PC (USB); Parallel Port, IEEE 1284
 Scan Resolution:
 Optical Resolution: 600 x 600 dpi
 Interpolated Resolution: 4800 dpi
 Pre-scan: 75 dpi
 Depth:
 Monochrome: 1 bit
 Text and Halftone: 20 bit
 Color: 60 bit
 Scan Driver: TWAIN Standard
 Bundled OCR Software: PaperPort SE 9.0, OmniPage SE v2.0

Faxing (M20i)

Transmission Speed: 3 seconds per page
 Communication Mode: Half Duplex
 Modem Speed: 33.6 Kbps
 Data Compression: JBIG, MMR/MR/MH (JPEG for color fax transmission)
 Resolution: pre-sets up to 400 x 400 dpi
 Fax Memory: 16 MB
Dialing
 Speed Dials Up to 200 locations
 Group Dials Up to 199 supported
Fax Features
 Halftones: 256 levels
 Color Fax Tx/Rec: Yes/No
 Secure Fax: Receive Mode, secure mailbox
 Battery Backup: Up to 100 hours when fully charged

Email (M20i, Optional M20)

Scan to SMTP addresses
 Local user access and authentication
 Device network access and authentication
 Guest mode access is available
 Network address list search via LDAP

Accessories

Network Accessory Kit (M20) (customer installable)
 Adds 32MB Memory, Ethernet NIC, PostScript® 3 printing support, Email Keyboard, and applicable software and documentation
 Second Paper Tray
 Cabinet Stand
 Foreign Device Interface (Service Install)

Media Handling

Input Paper Capacity
 Standard Tray: 550 sheets, optional second tray (550 sheets)
 Bypass Tray: 100 sheets
 Auto Tray Switching Capable

Paper Size

Minimum: 5 in. x 7 in./127 x 176 mm
 Maximum: 8.5 in. x 14 in./216 x 356 mm

Paper Weight

Standard Tray: 16 – 24 lbs/60 – 90 gsm
 Bypass Tray: 16 – 43 lbs/60 – 163 gsm
 Document Handler: 50 Sheets
 Output Tray Capacity: 250 Sheets
 Media Types: Paper, envelopes, labels, transparencies

Physical Dimensions (WxDxH):

21.3 in. x 17.4 in. x 19.2 in. / 540 x 441 x 488 mm
 21.3 in. x 17.4 in. x 24.4 in. / 540 x 441 x 619 mm with Second Paper Tray
 Weight: 58 lb / 26 kg; 67 lb / 30 kg with Second Paper Tray

Electrical

Power Switch: Yes
 Power: 110 VAC, 50/60 Hz or 220 VAC 50/60 Hz
 Power Consumption:
 Average: 450 watts
 Power Saver Mode: 35 watts
 Energy Saver: ENERGY STAR® Compliant

Operating Environment

Temperature
 Maximum Range 50° – 89.6°F/10° – 32°C
 Recommended Range 60.8° – 86°F/16° – 30°C
Humidity
 Maximum Range 20 – 80%
 Recommended Range 30 – 70%
 Device Memory: C20: 32 MB, M20: 32 MB, M20i: 80 MB (with Network Accessory Kit): 64 MB, M20i: 80 MB
 Device Management: ControlCentre™ 5.0, CentreWare Internet Services (Networked Products) CentreWare Web, CentreWare DP, NDPS and HP Openview

Supplies

Approximate Yields
 Toner Customer Replaceable Unit (CRU) – Starter kit: 4,000 images*; Replacement kit: 8,000 images
 Drum Cartridge Customer Replaceable Unit (CRU) – 20,000 images*
 *Capacities are approximate, based on 5% coverage on a letter/A4-sized page

Agency Approvals

Safety: UL Safety
 CSA Safety

The CopyCentre C20 and WorkCentre M20/M20i are designed to be customer-installable solutions.



XEROX
 Worldwide Partner



© 2004 Xerox Corporation. All rights reserved. Xerox®, The Document Company®, the digital X®, CopyCentre®, WorkCentre® and ControlCentre are trademarks of Xerox Corporation. In support of Xerox's environmental leadership goals, these models may contain some recycled components that are reconditioned. Support Center Practices (SCP) Certification is a registered trademark of Service Strategies Corporation. OmniPage® and PaperPort® are registered trademarks of ScanSoft, Inc. ENERGY STAR® is a registered mark. As an ENERGY STAR® Partner, Xerox Corporation has determined that these products meet the ENERGY STAR® guidelines for energy efficiency. Terra Choice Environmental Services, Inc. of Canada has verified that these products conform to all applicable Environmental Choice EcoLogo requirements for minimized impact to the environment. Product appearance, build status and/or specifications are subject to change without notice. Printed in U.S.A. 5/04 36 USC 220506 610P719190 W20BR-01UB