

SHARP.

Powerful Performance.
Advanced Functionality.
Optimized Productivity.



**NOW
with
STANDARD
DUPLEX
PRINTING**

Digital
iMAGER[™]
Advanced Workgroup System

C O P Y | P R I N T | S C A N | F A X

AR-M208N

AR-M208N

highlights

- 20 ppm copy/print speed
- 1,100-sheet standard paper capacity, expandable to 2,100 sheets
- Automatic trayless duplexing
- 16 MB copier memory, expandable to 272 MB
- Electronic sorting
- Integrated 600 dpi Host-based printing system with duplex capability
- Network Printing and Network Scanning option
- Super G3 fax option
- Optional Finisher with offset stacking and stapling
- Optional job separator tray
- Bar code font option

features

- Two standard 500-sheet paper cassettes
- 100-sheet Bypass Tray
- 40-sheet Reversing Single Pass Document Feeder (R-SPF)
- 25-400% zoom range (1% increments)
- 2-in-1, 4-in-1 copy
- Rotation copy
- Black/white reversal
- 50 account codes
- 256 level grayscale
- Easy to read LCD control panel



Digital
IMAGER™
Advanced Workgroup System

With standard automatic trayless duplexing and reversing automatic document feeder, many offices and workgroups would choose the AR-M208N IMAGER for its copier performance alone. When you consider it also offers standard 600 dpi duplex printing, the AR-M208N IMAGER is clearly the choice.

EMPOWER YOUR BUSINESS WITH THE 20 PPM SHARP AR-M208N DIGITAL IMAGER™

Combining advanced digital technology with powerful features, the new Sharp AR-M208N IMAGER delivers it all—in a modular, compact design. With duplex copying capability, standard 600 dpi duplex printing, 1,100-sheet standard paper capacity, and Sharp's world-famous reliability, this powerful performer is well-equipped to deliver the productivity required in today's fast-paced office environments. And, with options that include network printing, network scanning and Super G3 faxing, the AR-M208N IMAGER can easily grow as your business needs evolve.



SHARP

AR-M208N

F A X
I
N
C A
S
I
T
N
P R I
C O P Y



THE SHARP AR-M208N DIGITAL IMAGER DELIVERS POWERFUL 20 PPM PERFORMANCE WITH FLEXIBLE OPTIONS.

Productive performance

At 20 copies per minute, the AR-M208N IMAGER can easily handle your copying and printing needs. With a standard online paper capacity of 1,100 sheets, 40-sheet Reversing Single Pass Feeder (R-SPF), electronic sorting and standard 16 MB memory, the AR-M208N IMAGER can handle large copy and print jobs with ease.



With the optional paper drawers, load up to 2,100 sheets of statement to ledger-size paper for maximum efficiency.

Unparalleled image quality

The AR-M208N IMAGER produces output at 600 dpi resolution for prints with remarkable clarity and detail. With 256 shades of grayscale, the AR-M208N IMAGER produces crisp, clear photographs and graphics.

Need proposals for a big meeting? No problem. The AR-M208N IMAGER delivers multiple page sets quickly—no matter how many sets you need. Each set is output as soon as printing is completed, so there's no need to wait for the entire job to print to view your document. And with no sorter bins to empty, there isn't any limit to the size of sets or the number of sets you can create.

Enhanced functionality and flexibility

The Sharp AR-M208N IMAGER offers the functionality you need today, along with the flexibility you'll need for the future. With duplex copying capability, 16 MB copier memory and 600 dpi Host-based PC printing capability, the AR-M208N IMAGER provides a comprehensive, out-of-the-box solution to maximize your office productivity. Best of all, the modular design of the AR-M208N IMAGER allows you to add advanced functions as your business needs evolve.

Convenient network scanning

Add even more functionality to your office workflow with the optional Network Scanner Expansion Kit and Network Card. In seconds, you can easily scan documents to e-mail, your desktop or to file for seamless document transmission between users and platforms.

Powerful Super G3 faxing

With the optional 33.6 Kbps Super G3 Fax Kit with JBIG compression, you can fax documents quickly and efficiently. And, with 350 auto dial keys and 2 MB standard fax memory, you'll reduce the time you spend faxing. The Super G3 Fax Kit also supports Sharp's F.A.S.T. Remote Diagnostics System—enabling authorized Sharp dealers to diagnose and solve problems right over the phone line.

Professional finishing

The AR-M208N IMAGER also offers advanced finishing capabilities to make your documents look professional. Collating, sorting and stapling are completed automatically—saving time and improving efficiency.



The optional Finisher/Sorter with Offset Stacking and Stapling allows you to collate and staple multiple-page documents.

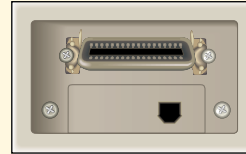
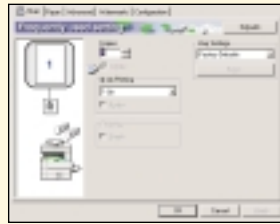


The easy-to-use LCD panel easily guides users through features and options with simple prompts. The animated display logically leads you step by step through the selections. To avoid costly mistakes, you can easily confirm your selections with the touch of a key before you begin printing.

INNOVATIVE MODULARITY MAKES IT EASY TO ADD FUNCTIONALITY AS YOUR BUSINESS NEEDS EVOLVE.

STANDARD HOST-BASED PRINT CONTROLLER

Sharp's Standard Host-based Print Controller with JBIG technology reduces the data size of print jobs and improves overall throughput. And, with duplex printing capability, you can maximize your output efficiency.



Standard USB and Parallel Ports make connecting the AR-M208N IMAGER to your computer flexible and easy.

OPTIONAL NETWORK PRINTING AND CONNECTIVITY

Sharp's PCL5e/PCL6 Print Controller combines state-of-the-art digital technology with advanced functionality for truly Best-In-Class features. And with 1,200 dpi enhanced resolution and 256 shades of grayscale, the AR-M208N IMAGER can deliver ultra-crisp text and incredibly detailed graphic images. For added convenience and functionality, add the optional 10/100 Network Interface Card (NIC).



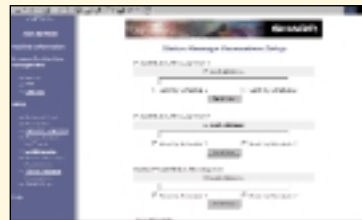
Printer Administration Utility software enables network administrators to monitor any SNMP compliant printer on the network.



Printer Status Monitor enables users to view network printer conditions through an easy-to-use graphical interface. It even notifies you when your job is complete.



Sharp Remote E-mail Diagnostics (R.E.D) is an advanced communication system designed to send device status information over the Internet. Administrators or Authorized Sharp Dealers can use this support utility.



NETWORK SCANNING

Optional network scanning adds extra functionality to your office workflow and maximizes productivity. Easy-to-use software and utilities make set-up a breeze.

Sharp AR-NS2 Network Expansion Kit

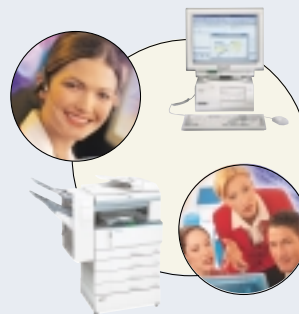
Send documents directly to your desktop, file server or e-mail.



Sharpdesk™ Sharpdesk software's easy-to-use graphical interface enables users to manage, compose, store and send documents directly from their desktop PCs.

SUPER G3 SUPER G3 FAXING

- Transmit documents within 2 seconds*
- Store up to 350 numbers for the most frequently dialed destinations
- Fax 2-sided documents quickly and easily with the Duplex Scanning feature



Remote Diagnostics With Sharp's F.A.S.T. system, your IMAGER can connect to an authorized service technician who monitors operation and can diagnose and solve problems right over the phone.



AR-M208N

DIGITAL IMAGER SPECIFICATIONS

GENERAL SPECIFICATIONS

Type:	Console
Copy System:	4-Beam laser electronic
Originals:	Sheets, bound document, photographs
Original Size:	Maximum 11" x 17"
Copy Sizes:	Maximum 11" x 17"; Minimum 5.5" x 8.5"
Copying Speed:	20 ppm (8.5" x 11" at 100% ratio at 600 dpi)
Continuous Copy:	Maximum 999
Copy Ratio:	25%-400% in 1% increments Fixed Presets: 25%, 50%, 64%, 77%, 95%, 100%, 121%, 129%, 141%, 200%, 400%, 800%
Printing Resolution:	600 dpi
Gradation:	256 levels
Duplexing:	Standard (trayless)
First Copy Time:	Approximately 4.8 seconds
Warm-Up Time:	Approximately 40 seconds
Memory Size:	16 MB, expandable to 272 MB
Original Feed System:	Standard 40-sheet Reversing Single Pass Feeder (R-SPF)
Copy Paper Feed:	Two 500-sheet adjustable paper cassettes (standard) 100-sheet Bypass Tray (standard) Standard 40-sheet R-SPF Two additional 500-sheet paper cassettes (optional)
Optional Output:	Finisher/sorter
Fusing System:	Heat rollers
Developer System:	Magnetic Brush Development
Exposure System:	Moving Optical Source, Slit Exposure (Stationary Platen) with Automatic Exposure Function
Light Source:	Xenon lamp
Required Power Supply:	120 volts, 60 Hz
Power Consumption:	Maximum 1.5 kW
Dimensions:	24.5" x 23" x 25.5" (w x d x h)
Weight:	Approximately 92.2 lbs.

Design and specifications are subject to change without notice.

Sharp is a registered trademark of Sharp Corporation. All other trademarks and registered trademarks are property of their respective holders.

* Based on ITU Test chart #1 in standard resolution, actual transmission time will vary based on line conditions.

** Requires PCL5e/PCL6 Print Controller

STANDARD HOST-BASED JBIG PRINT CONTROLLER

PDL:	Sharp SPCL Host-based controller with JBIG
Resolution:	600 dpi/300 dpi, 1200 x 600 dpi with smoothing
Print Speed:	Up to 20 ppm
Standard Interface:	IEEE 1284 Bi-Directional Parallel Port (1) USB Port (1)
Plug and Play:	Yes
Operating System:	Microsoft Windows®, 95, 98, ME, XP Windows, 2000, NT4
Memory:	16 MB
Paper Selection:	Paper trays or bypass
N-Up Printing:	Yes 2/4
Fit to Page:	Yes
Print Quality Selection:	Draft, normal, photo
Watermark:	Yes

OPTIONAL PCL5e/PCL6 CONTROLLER

PDL Support:	PCL5e/PCL6 (standard) Emulated PostScript 3 (optional)
Memory:	32 MB standard; 288 MB maximum
CPU:	200 MHz RISC
Client Operating System Support:	Windows 95/98/2000/ME, Windows NT 4.0, Netware®, Macintosh® OS 8.51 or later (with optional PS3 Kit)

OPTIONAL PRINT SERVER CARD **

Protocol Support:	TCP/IP, IPX/SPX, EtherTalk, NetBEUI, Peer-to-Peer
I/O Interface:	Parallel, 10/100 BaseTX

OPTIONAL NETWORK SCANNER

(optional AR-NS2 Network Scanner Expansion Kit and Print Server Card required)

Resolution Selection:	Up to 600 dpi
Compatibility:	TWAIN compliant (push out method)
Sharpdesk Licenses:	10-user licenses included

OPTIONAL SUPER G3 FAX

Transmission Mode:	Super G3, G3
Modem Speed:	33.6 Kbps
Compression Method:	JBIG, MMR, MR, MH
Transmission Speed:	Approximately 2 seconds with JBIG*
Auto Dialing Methods:	50 rapid dial keys, 300 speed dial keys
Scanning Method:	Sheet fed simplex or duplex or book
Max. Transmit Resolution:	400 dpi (ultra-fine)
Memory Std./Max.:	2 MB/10 MB
Halftone:	256 levels
Broadcasting:	Up to 200 destinations
Programs:	9
Timer Functions:	Up to 50 jobs



Sharp Electronics Corporation
Network Office Systems Group
Sharp Plaza, Mahwah, NJ 07430-1163
1-800-BE-SHARP

www.sharppusa.com



As an ENERGY STAR® Partner, SHARP has determined that this product meets the ENERGY STAR® guidelines for energy efficiency.