

**SHARP®**

ARM205



**Multifunction** Desktop IMAGER™  
with **Full-Color PC Scanning**

*Digital*  
**IMAGER™**  
Advanced Document System



## Advanced Flexibility When You Need It Most.

The Sharp AR-M205 Digital IMAGER™ delivers the performance and advanced flexibility small offices need — all in a low-cost multifunction copier. With a 500-sheet paper capacity, 100-sheet bypass tray, auto duplexing, and standard 600 dpi host-based printing, the AR-M205 IMAGER can easily keep pace with even the most demanding offices. And, that's just the beginning. This powerful performer also delivers **standard full-color ledger-size PC scanning** — enabling you to easily respond to today's graphic-intensive demands. And, with versatile options like 100-page electronic sorting and a speed-enhanced printing system upgrade, it's easy to add functionality as your business needs evolve.



copy | print | color scan

# AR-M205

## With advanced features and innovative modularity, the Sharp AR-M205 Digital IMAGER™ delivers outstanding performance—all in a compact, desktop design.

### Convenient, built-in color PC scanning!

What's the latest Sharp innovation? Full-color PC scanning! Sharp leads the industry with ledger-size, full-color scanning for on-the-fly versatility. Now there's no need for extra peripherals that take up valuable office space—with Sharp ingenuity, we've integrated everything into a compact desktop design. And with Sharpdesk™ desktop document management software, you can edit, save, or distribute your document—across the network—or across the world—quickly and easily.



### High-quality digital copying

The AR-M205 IMAGER provides many flexible copy features designed to grow with your business. With speedy output, 11" x 17" capability, and optional electronic sorting, the AR-M205 IMAGER is the smart choice for any small office or workgroup.

- 600 dpi true laser quality output
- 20 copies per minute
- Scan-Once Print-Many Memory Management
- 25% - 400% zoom range with 8 preset ratios
- Cost-effective Toner-Save mode
- Optional 40-sheet Reversing Single Pass Document Feeder (RSPF)
- Auto Duplexing



Add the optional 250-sheet x2 adjustable paper trays for a total online paper capacity of 1100 sheets.

### Key features

- 600-sheet paper capacity, upgradeable to 1,100 sheets (with options), includes 100-sheet Bypass Tray
- Standard offset stacking separates each print/copy job for easy retrieval
- 32 MB standard memory, upgradeable to 304 MB with options
- 600 dpi host-based PC printing system
- Full color 600 x 1200 dpi PC scanning<sup>1</sup>
- Sharpdesk integrated desktop document management software
- Button Manager utility allows easy configuration of 6 one-touch scan-to-desktop keys
- Standard IEEE 1284 parallel and USB-1.1 ports for flexible PC connections<sup>2</sup>

### Productive functionality

For even more productivity, add the Function Upgrade Kit, which offers 16 MB additional memory, electronic sorting, speed-enhanced PC printing, and a USB-2.0 port for efficient device sharing. And, for busy workgroups, you can add the optional PCL6 Network Printing/Scanning Kit (available late 2003).

### Function Upgrade Kit Adds:

- 100-page electronic sorting, which offers offset sort stacking, rotation copy, two-in-one/four-in-one copy, edge erase, center erase, and margin shift
- JBIG speed-enhanced printing system upgrade, which offers Rip-Once Print-Many memory management and 20-ppm printing performance
- USB-2.0 PC data port allows a third user to connect to the AR-M205 for efficient device sharing
- 16 MB additional memory with expansion capability to add 256 MB option

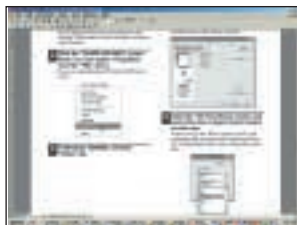
### TechTalk

USB 2.0 transfer rates are up to 40X faster than USB 1.1

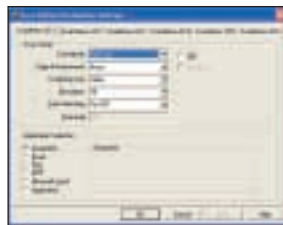
<sup>1</sup>Non-interpolated ledger-size color scanning at 600 dpi requires AR-EB7 Function Upgrade Kit and 256 MB memory expansion

<sup>2</sup>PC scanning is only performed through USB port

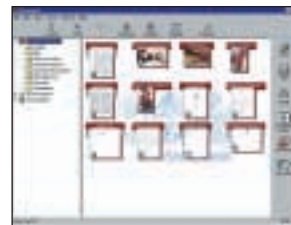
# AR M 205



Printer Driver Screen



PC Scan Destination Details



Complete document management on your PC with Sharpdesk

## General Specifications

Type:	Digital duplex copier-based MFP, desktop
Copy System:	Dry electrostatic transfer system
Originals:	Sheets, bound documents
Original Size:	11" x 17" maximum
Copy Size:	Min. 5 1/2" x 8 1/2", Max. 11" x 17"
Copy Speed:	20 copies per minute (8 1/2" x 11") 15 copies per minute (8 1/2" x 11"R) 12 copies per minute (8 1/2" x 14") 10 copies per minute (11" x 17")
Continuous Copy:	Max. 99 copies
First Copy Out Time:	7.2 Seconds
Warm Up Time:	45 Seconds
Zoom Range:	25% to 400% in 1% increments (with SPF 50-200%)
Fixed Zoom Mode:	50%, 64%, 77%, 95%, 100%, 121%, 121%, 129%, 141%, 200%
Exposure System:	Fixed optical source, slit exposure (stationary platen) with automatic exposure
Paper Feed System:	Standard: (2) 250-sheet paper cassette with automatic feed (1) 100-sheet manual bypass tray Optional: (1) 250-sheet paper feed unit or (1) 500-sheet paper feed unit (250 x 2)
Original Feed System:	Standard: Original table with optional platen cover Optional: 40-sheet reversing single pass document feeder (RSPF)

## Paper Type:

- Paper Cassettes: 15-24 lb. standard or recycled bond paper
- Bypass Tray (multi-sheet feed): up to 100 sheets 15-20 lb. standard bond or recycled bond paper, up to 30 sheets for postcards, up to 5 sheets for envelopes (#10 monarch)
- Bypass (single-sheet feed): 15-55 lb standard or recycled bond paper, OHP, labels, and envelopes

Memory:	32 MB (shared), expandable to 304 MB with options <sup>1</sup>
Copy Resolution:	Scan: 600 dpi, Output: 600 dpi
Exposure Modes:	Photo Mode: 600 x 600 dpi Auto Exposure: 600 x 300 dpi
Gray Scale:	256 gradations/2 levels
Copy Features:	Scan-Once Print-Many, Auto Paper Sensing (APS), Auto Magnification Sensing (AMS), auto tray switching, memory copy, manual zoom
Output Tray Capacity:	250 sheets (face down)
Offset Stacking:	Standard paper shifter (multi-page sort requires AR-EB7)
Fusing System:	Heat roller
Developer System:	Magnetic brush development
Light Source:	Cold cathode lamp
Power Requirement:	AC 120 V, 60 HZ, 12 Amps
Power Consumption:	Max 1200 W, stand-by 5 W
Weight:	Approx. 92 lbs.
Dimensions:	23 15/64"(w) x 21 15/32"(d) x 20 19/32"(h)

## Printer Function

Print Speed:	10 pages per minute/20 pages per minute with optional AR-EB7 Function Upgrade Kit
Emulation:	Host-based/JBIG speed enhanced host-based with optional AR-EB7 Function Upgrade Kit
Resolution:	600 dpi
Operating System:	Windows® 95/98ME, NT4.0, 2000, XP
Software:	Print driver, Printer Status Monitor
Read Once Print Many:	Available with optional AR-EB7 Function Upgrade Kit, up to 50 pages @ 600 dpi
Interface:	Standard: IEEE 1284 (ECP) parallel port, USB 1.1 Optional: USB 2.0 with optional AR-EB7 Function Upgrade Kit
Page Memory:	32 MB (shared), expandable to 304 MB with options <sup>1</sup>
Features:	Offset print, status monitor, N-up printing, fit to page, watermark, center position

## Color Scanner Function

Type:	Flat head full color scanning system
Scanning Style:	Platen/original feeder
Light Source:	Cold cathode lamp
Resolution:	Basic: 600 x 1200 dpi <sup>2</sup> , setting range 50 – 9600 dpi <sup>3</sup>
Original Type:	Sheet/book
Scanning Method:	Original cover/SPF
Output:	8 pixels/bit, A/D 12 bit
Protocol:	TWAIN, WIA (Windows XP)
Interface:	USB 1.1/optional USB 2.0 upgrade with AR-EB7 Function Upgrade Kit
Software:	Sharpdesk Document Management software, Button Manager, Composer
Scanner Keys:	6 Scan to Desktop destination keys (requires Button Manager)

## Optional AR-EB7 Function Upgrade Kit

Memory:	16 MB standard (shared), expandable to 272 with 256 MB DIMM
Electronic Sort Function:	Scan capacity for sort/group: up to 100 sheets with 6% original offset stacking, rotation copy, 2-in/1/4-in-1 copy, edge erase, center erase, margin shift
Printer Function:	JBIG speed enhanced printing system upgrade increases print speed to 20 PPM Read-Once Print-Many: Up to 50 pages @ 600 dpi (16 MB shared memory)
USB 2.0 Data Port:	For scanning and printing, increases data transfer speed up to 480 Mbps*

\* Requires USB-2.0 connection at host PC

## Optional Equipment

AR-EB7:	Function Upgrade Kit (Dual Function Board)
AR-RP6:	40-sheet reversing single pass feeder
AR-D24:	250-sheet paper feed unit (single cassette)
AR-D25:	500-sheet paper feed unit (dual 250-sheet cassettes)
AR-VR5:	Platen Cover

## Supplies

AR-202MT:	Toner cartridge
AR-202MD:	Developer
AR-202DR:	Drum cartridge

<sup>1</sup> Optional ER-EB7 Function Upgrade Kit provides 16 MB additional memory, which can be expanded to 272 MB with 256 MB DIMM

<sup>2</sup> Non-interpolated ledger size color scanning @ 600 dpi or higher requires optional AR-EB7 with 256 MB memory expansion

<sup>3</sup> Resolution settings higher than 600 x 1200 dpi are interpolated

Design and specifications subject to change without notice.

Sharp is a registered trademark of Sharp Corporation. All other trademarks are property of their respective holders.

Sharp Electronics Corporation  
Sharp Plaza, Mahwah, NJ 07430-1163  
1-800-BE-SHARP

[www.sharppusa.com](http://www.sharppusa.com)

**SHARP**  
be sharp™

