

Konica

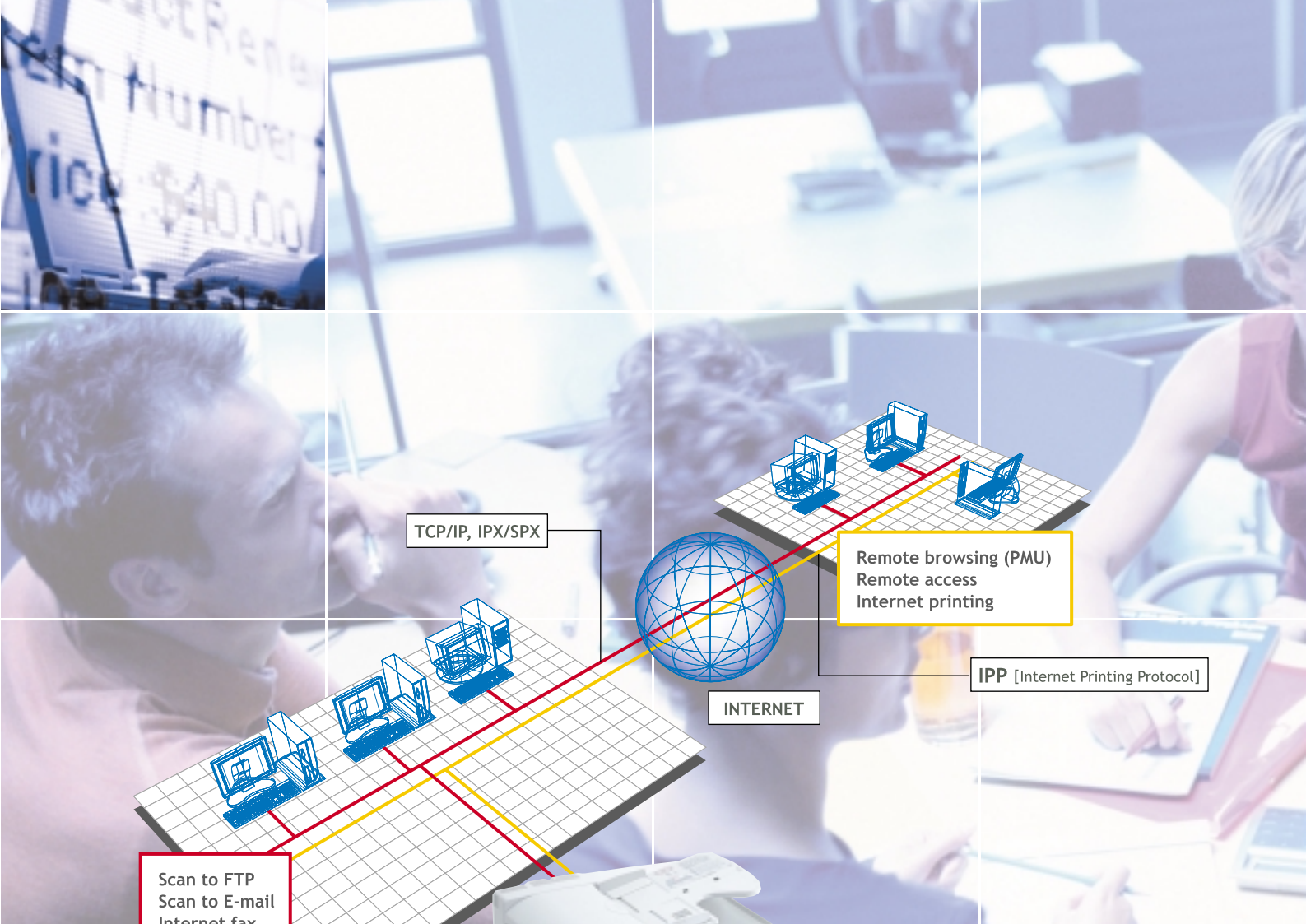


Looking Toward the Future of Business



7022
DI/OS Pro





Scan to FTP
Scan to E-mail
Internet fax

TCP/IP, IPX/SPX



INTERNET

Remote browsing (PMU)
Remote access
Internet printing

IPP [Internet Printing Protocol]



7022
DI/OS Pro

It's Not What You Can Do Today, It's What You Can Do Tomorrow That Makes The Difference

Sure, lots of companies are offering solutions for what your business needs today, but shouldn't you be thinking about tomorrow, too? Our DI/OS Pro line of business machines considers the future. The 7022 DI/OS Pro was designed for complete scalability over your network. It combines network printing, copying, scanning, faxing and document finishing with Internet functions that revolutionize workflow efficiency. And add to that a full collection of optional peripherals that allow you to customize the 7022 DI/OS Pro to keep you ahead of the times.



A Full Line of Peripheral Equipment

PRINT CONTROLLERS

Select from 2 types of print controllers to satisfy your network printing needs



IP-422

DF-314

Recirculating sheet-through document feeder with split cover design enables high-speed copying, scanning and faxing



INNER TRAY UNIT IT-101

Additional exit tray allows sorting by source even without a finisher



MODULAR-TYPE FINISHER FS-107

Full-function finisher with 2 standard trays (up to 2 more trays optional) for off-set sorting, grouping and multiple stapling



FAX KIT FK-102

Modular unit adds high-speed, high-quality faxing functions

DRAWER BASE UNITS

Choose one of 2 units to add a large-capacity tray (1,500 sheets) or 2 universal size trays (500 + 500 sheets)



DB-410



DB-210





Network Printing with the 7022 DI/OS Pro

OUTPUT OVER YOUR NETWORK

Connect the 7022 DI/OS Pro to the IP-422 print controller to enable seamless document production from any PC on your LAN. The IP-422 incorporates a 133MHz ELAN processor to output at a steady 22 ppm.



QUALITY IMAGING

While the 7022 DI/OS Pro comes standard equipped with PCL5e and PCL6-compatible page description languages, industry-standards, an authentic Adobe PostScript 3 interpreter is available via the optional PS-343. This PDL offers the highest page interpretation capability and total support for PDF.



Adobe® PostScript® 3™



WEB-BASED ACCESS

This Print Monitor Utility greatly improves office workflow. Remote users can print or check machine status over the Internet using the simplified graphical interface, changing the way you access your 7022 DI/OS Pro.



Network Scanning with the 7022 DI/OS Pro

HIGH-SPEED INPUT

The IP-422 print controller enables use of the scanning function. Using the RADF you can input mixed originals up to A3 size. Input is a convenient 22 sheets per minute for A4 size. The originals are converted to data and saved in memory. Then, from a connected PC, access the 7022 DI/OS Pro to retrieve the data for use in compiling documents for printout.



Scan materials via the RADF



Scan bound materials directly from the platen



Internet Functions with the 7022 DI/OS Pro

SCAN TO FTP

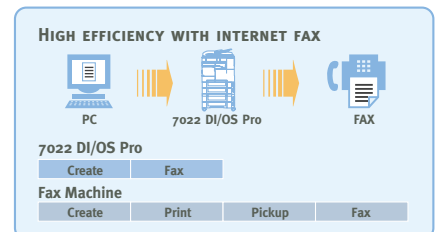
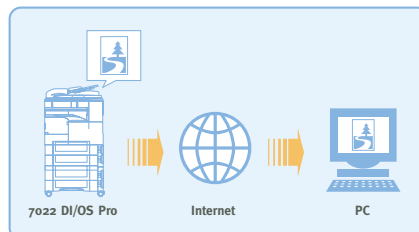
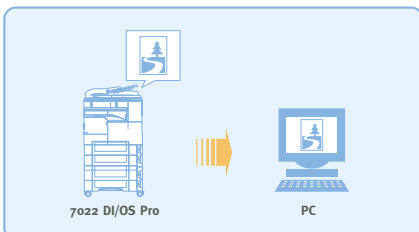
This function effectively changes the way you manage and store documents. First, easily scan originals using either the platen or the RADF, or a combination of both. Then, select the file format you wish to save the data in, such as PDF or TIFF, and forward the file to your FTP server for downloading by any connected PC.

SCAN TO E-MAIL

Making use of the high-speed RADF and Konica's leading scanning technology, the 7022 DI/OS Pro efficiently inputs and sends e-mail of remarkable quality. Instead of having to retrieve scanned data to send from your PC, input the address in the LCD and send instantaneously.

INTERNET FAX

With the value-added IP-422 print controller connected to the 7022 DI/OS Pro, you can create and send faxes straight from your PC (requires optional fax kit FK-102). This allows you to cut down on unnecessary printing, while enabling better data management by saving important correspondence right on your desktop.



HIGH EFFICIENCY WITH INTERNET FAX



7022 DI/OS Pro

Create Fax

Create

Fax

Create

Print

Pickup

Fax

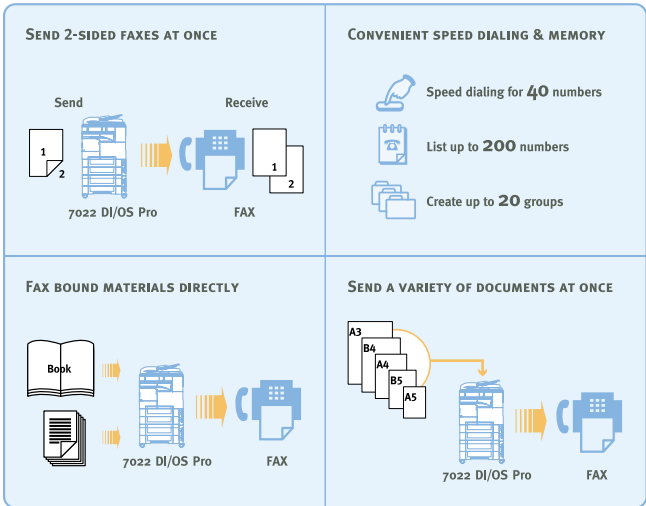
*Ask your local dealer about release dates for your area



Digital Faxing with the 7022 DI/OS Pro

SUPER G3 FAXING

Just plug in the optional module-type FK-102 fax kit and really take advantage of improved workflow over your network. Input documents at high speed using the RADF and transmit the data using the quick processing Super G3 format. This saves time and money by reducing transmission time.

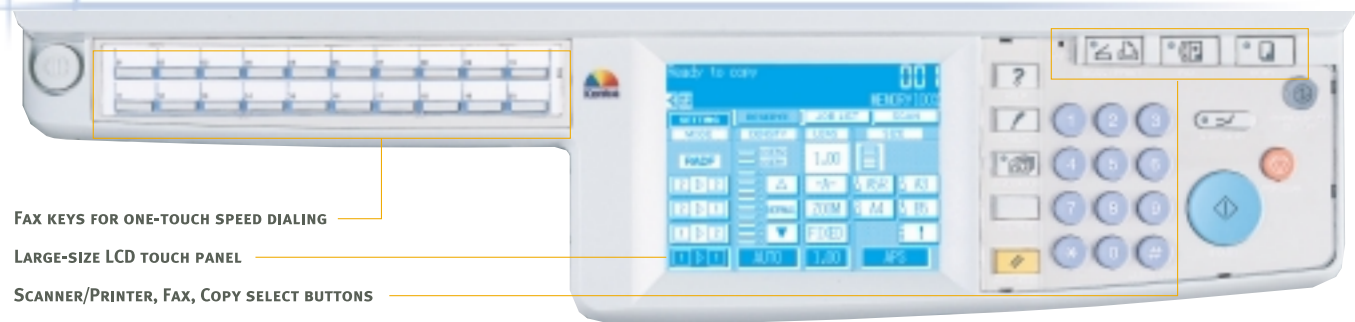


ADVANCED FAX FUNCTIONS

The 7022 DI/OS Pro realizes a variety of advanced fax functions that a conventional fax machine could only dream of. Easily fax 2-sided originals without first having to copy side B; fax copies of bound or awkward size materials straight from the platen; and fax mixed size originals all at once without worrying about misalignment.



Digital Copying with the 7022 DI/OS Pro



EASY OPERATION

All copy functions are available via the control panel, which features the large-size touch-screen LCD. The scan/print, fax and copy mode selector buttons have been placed conveniently at the top right of the panel.

DIGITAL EDITING

Sophisticated features allow you to customize documents created at the console as easily as if you were making them from scratch. Add a page number, set number or date/time for reference, or authenticate documents with a stamp or watermark.

SPEEDY WORK

The 7022 DI/OS Pro can copy at a steady 22 copies per minute. It features a fast warm-up time of less than 30 seconds, and a super-quick response FCOT of less than 5 seconds.

TWO-SIDED OUTPUT

Using the standard ADU, the 7022 DI/OS Pro can quickly create two-sided documents, saving paper and reducing the size of large reports.

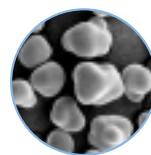
TONER RECYCLING

By detecting and returning unused toner, the 7022 DI/OS Pro saves resources and limits its impact on the environment.



DIGITAL TONER

Featured in all DI/OS Pro models, Konica's polymerized Digital Toner reproduces fine lines and text in stunning clarity. And compared to pulverized toners, production of Konica's Digital Toner reduces emissions of acid-rain causing CO₂, NO_x and SO_x by about 40%.



DIGITAL TONER PARTICLES



PULVERIZED TONER PARTICLES

DOCUMENT FINISHING

The optional multi-tray finisher FS-107 comes with 2 standard trays with options for up to 2 more trays. This modular finisher can off-set sort, group and staple in multiple positions, letting you easily create fully finished documents at the console or from your PC.



STAPLING AT THE CONSOLE



STAPLING FROM A PC



SPECIFICATIONS

KONICA 7022 – MAIN SPECIFICATIONS	
Design	Desk-top type (fixed original platen)
Reprographic system	Laser electronic transfer
Acceptable originals	Single sheets, books, 3-dimensional objects
Maximum original size	A3
Copy size	A3 – A5R
Reduction/enlargement	25 – 400% in 1% increments
Preset standard ratios	1:0.71, 1:0.82, 1:0.86, 1:1, 1:1.15, 1:1.22, 1:1.41, plus 3 user settings
Max. resolution	600 dpi
Memory	32MB (standard), 288MB max. (optional)
Copies per minute	22 (A4-size)
Continuous copying	1 – 999 copies
Copy paper	Regular or special paper (off-set masters, transparencies, labels, etc.)
Warm-up time	Less than 30 seconds (20° C, 50% RH, 230V AC, 50Hz)*
First copy output time	Approx. 5 seconds (A4-size)
Paper supply	2 paper trays (500 + 500 sheets) + multi-sheet bypass (50 sheets)
Photosensitive diode	OPC drum
Developing process	Dry dual component, magnetic brush system
Fixing	Heated roller fixing
Density control	Automatic and manual, 9 levels with 2 user settings
Power requirements	230V AC, 50Hz (110V AC, 60Hz for Taiwan only)
Power consumption	1300W max. (fully equipped)
Dimensions (WxDxH)	590mm x 595mm x 730mm (main unit with DBU)
Weight	Approx. 72kg (main unit only)

*Warm-up time may vary depending on power requirements.

DF-314 AUTOMATIC DOCUMENT FEEDER (OPTIONAL)	
Design	Recirculating sheet-through type
Maximum original size	A3 – B6 (35g/m ² – 130g/m ²)
Original capacity	50 sheets
Power requirements	24V, 5V DC (supplied from main unit)
Power consumption	Max. 100W

IP-422 PRINTER KIT (OPTIONAL)	
Design	Internal type
CPU	ELAN SC520 – 133MHz
Memory capacity	64MB (standard), up to 128MB
Compatible OS	Windows® 95/98/Me, Windows NT® 4.0, Windows® 2000/XP
Printer driver	Windows® 95/98/Me; Windows NT® 4.0/Windows® 2000/XP
Processing speed	22 ppm at 600 x 600 dpi
Maximum resolution	600 dpi x 600 dpi
Interface	Ethernet 10Base-T, 100Base-TX (standard)
Protocol	TCP/IP, IPX/SPX, AppleTalk®

IP-011 PRINTER KIT (OPTIONAL)	
Design	Internal, host base type
CPU	D8401 with embedded PowerPC 401GF
Memory capacity	16MB (standard), up to 80MB
Compatible OS	Windows® 95/98/Me, Windows NT® 4.0, Windows® 2000/XP
Printer driver	Windows® 95/98/Me; Windows NT® 4.0/Windows® 2000/XP
Processing speed	22 ppm at 600 x 600 dpi
Maximum resolution	600 dpi x 600 dpi
Interface	Ethernet 10Base-T, 100Base-TX
Protocol	TCP/IP, IPX/SPX

FS-107 FINISHER (OPTIONAL)	
Design	Multi-tray type
Function	Off-set sort, group, and staple (3 positions: 1 staple x 2 positions, 2 staples)
Copy paper size	A3, B4, A4, B5, A5R, B6, 11" x 17", 8.5" x 14", 8.5" x 11", 5.5" x 8.5"R
Copy paper	Plain paper
Paper capacity	Standard 2-tray configuration: Tray 1: 100 sheets, Tray 2: 1000 sheets With 1 optional tray: Tray 1: 100 sheets, Tray 2: 100 sheets, Tray 3: 600 sheets With 2 optional trays: Tray 1: 100 sheets, Tray 2: 100 sheets, Tray 3: 100 sheets, Tray 4: 100 sheets
Staple capacity	50 sheets (80g/m ² and up to 5mm total thickness)
Power requirements	24V DC, 5V DC (supplied from main unit)
Power consumption	Max. 100W

Not all stapling positions are available for all paper sizes

FK-102 FAX KIT (OPTIONAL)	
Design	Internal type
Transmission format	Super G3
Transmission speed	Approx. 3 seconds/page (28.8kbps)
Maximum paper size	A3
Acceptable paper sizes	A5 – A3
Line resolution	8 x 3.85/8 x 7.7/16 x 15.4 lines/mm
Modem transmission rate	33600/31200/28800/26400/24000/21600/19200/16800/14400/12000/9600/7200/4800/2400bps
Memory capacity	Standard: 2MB; Upgrades up to 16MB (uses E-RDH memory on main unit)
One-touch dialing	40
Memory dialing	200
Group fax	Yes
Fax/tel switching	Automatic
ECM function	Yes

SCANNER (OPTIONAL—INCLUDED WITH IP-422)	
Acceptable original size	A3, B4, A4, A4R, B5, B5R, A5, A5R, B6R
Scanning mechanism	Fixed scanning using a CCD image sensor
Interface	TWAIN
File format	TIFF, PDF
Resolution	600, 400, 300, 200 dpi
Scanning speed	22 opm (600 or 400 dpi)
Compatible OS	Windows® 95/98/Me, Windows NT® 4.0, Windows® 2000/XP
Protocol	TCP/IP

IT-101 INNER TRAY UNIT (OPTIONAL)	
Design	2-tray type
Function	Off-set sort and auto output by source
Copy paper size	A3, B4, A4, B5, A5R, B6, 11" x 17", 8.5" x 14", 8.5" x 11", 5.5" x 8.5"R
Copy paper	Plain paper
Paper capacity	Upper tray: 50 sheets Lower tray: 100 sheets
Power requirements	24V DC, 5V DC (supplied from main unit)
Power consumption	Max. 6.5VA



The 7022 DI/OS Pro has achieved Energy Star certification.

Requirements for safe use • Please read and follow the instruction manual to ensure safe operation. • Only operate using appropriate power supply and voltage. • Connecting the earth wire to an inappropriate place may cause explosion or electric shock. Please connect accordingly (Taiwan and the Philippines only).
• PostScript® and PostScript®3™ are trademarks of Adobe Systems, Inc. • Windows and Windows NT are registered trademarks of Microsoft Corporation. • Macintosh is a trademark of Apple Computer, Inc. • NetWare is a trademark of NOVELL, Inc. • UNIX is a trademark exclusively licensed by X/Open Company Limited. • Other company and product names are registered trademarks and trademarks of their respective companies.



KONICA CORPORATION Shinjuku Nomura Building No.26-2, Nishi-shinjuku 1-chome, Shinjuku-ku, Tokyo 163-0512, Japan

FOR FURTHER DETAILS CONTACT: